



CORPORATE PRESENTATION

NOVEMBER 2022



COMPANY PROFILE

FPX solutions B.V. is a Dutch company with its head office in the **Amsterdam** region. It has two manufacturing units; i.e. in **Rotterdam & Rijen**. FPX has a Middle East office and assembly facility in Dubai, U.A.E.

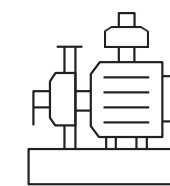
FPX Solutions BV is focused on **Water, Waste Water, Power, Irrigation, Oil & Gas and Industry sectors**.

The group employs more than 100 full time employees who are engaged in Manufacturing, Sales, After market, Upgrades and Spare Parts as well as Service. FPX has products for Building Services (Residential & Commercial), Water Management, General Industry, OEM's, Machine Builders, Water & Sewage Treatment Plants. Global operations are managed through strategic partnerships, agents and distributors, thereby easing business for customers and end users.

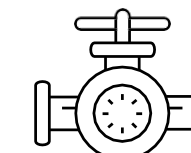
FPX is committed to value added solutions to its customers and cost-effective services. FPX offers System Engineering & Consulting, Assembly, Commissioning, Repairs, Retrofit, Annual Maintenance Contracts and Installation Services to its clients.



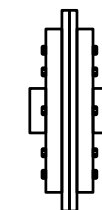
WATER
TREATMENT



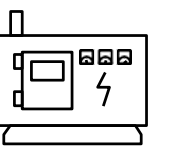
FLUID
MANAGEMENT



VALVES



MECHANICAL POWER
TRANSMISSION



POWER
GENERATION



OUR CAPABILITIES

FPX has a manufacturing plant in Rotterdam. This facility has been certified by Oil Majors for products supply in Refineries, Power plants & Petrochemical plants.

In this plant, pump performance testing for Horizontal as well as Vertical pumps is possible with power up to 1MW. This facility can offer the following services:

Design, Drawings, Engineering, Project Management.

Machining and Assembly

Rotor Balancing

Quality Control & Performance Testing

Refurbishment & Upgrade



FIELD SERVICES

We offer service for the industrial equipment like pumps, valves, steam turbines, gensets, mechanical seals and more. You can count on our experts to provide you with sound advice on your service requirements. Whether you need a new installation and commissioning, upgrade, replacement or high-quality maintenance and repair service, you can rely on our service team to deliver quick, efficient and right solution in accordance with global standards.

Vibration analysis, laser, alignment, on - site issues, Field inspections and analyses, Condition monitoring are offered to clients as per their requirements.

AFTER MARKET

FPX offers service for industrial equipment like Pumps (API, Non API, centrifugal and PD pumps), Turbines and Generator sets.



**WATER
TREATMENT**



WATER TREATMENT

We have more than 20 years of experience in the technology of Drinking Water, Waste Water and Process Water. We offer Water Treatment Solutions and have affordable, personalised solutions in Water Filtration and Water Treatment. We develop and produce equipment for various applications and as per the specific needs of our customers. We have established dedicated and repeat customers and have references over the year in the field of Water Filtration, Wastewater, Process Water and Consumption Water. We have supply references in Western Europe, Middle East, Eastern Europe and CIS countries.

Following technologies can be offered:

Reverse osmosis

Ultrafiltration Dissolved

Filtration

Ozone and Ultraviolet filtration



REVERSE OSMOSIS (OS)

Reverse osmosis is used to remove dissolved materials in water. The most famous application is the production of drinking water out of sea water.

Applications:

- > Drinking water production
- > Manure processing
- > Wastewater
- > Digestate
- > Off-shore
- > Maritime

ULTRAFILTRATION

Ultrafiltration is used to remove undissolved materials out of water. The most famous application is the production of drinking water out of source or surface water.

Applications:

- > Drinking water production
- > Legionella gatekeeper systems
- > Process water treatment
- > Wastewater treatment
- > Seawater Pretreatment for Reverse Osmosis
- > Bacteria and virus removal in drinking water
- > Pre-treatment water aquaculture

DISSOLVED AIR FLOTATION (DAF)

Dissolved Air Flotation (DAF) is used for waste water treatment and pre-treatment of process and drinking water.

Applications:

- > Wastewater treatment
- > Fat separators
- > Protein separators
- > Drinking water pre-treatment
- > Surface water treatment

OZONE DISINFECTION

Ozone is widely used for the disinfection and purification of waste water and drinking water.

Applications:

- > Food industry
- > Aqua culture
- > Drinking water
- > Wastewater
- > Swimming pools
- > Cooling water
- > Agriculture

ULTRAVIOLET (UV)

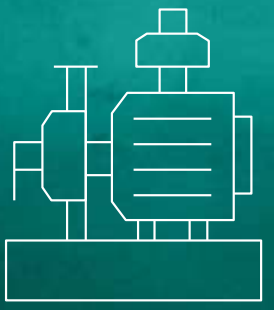
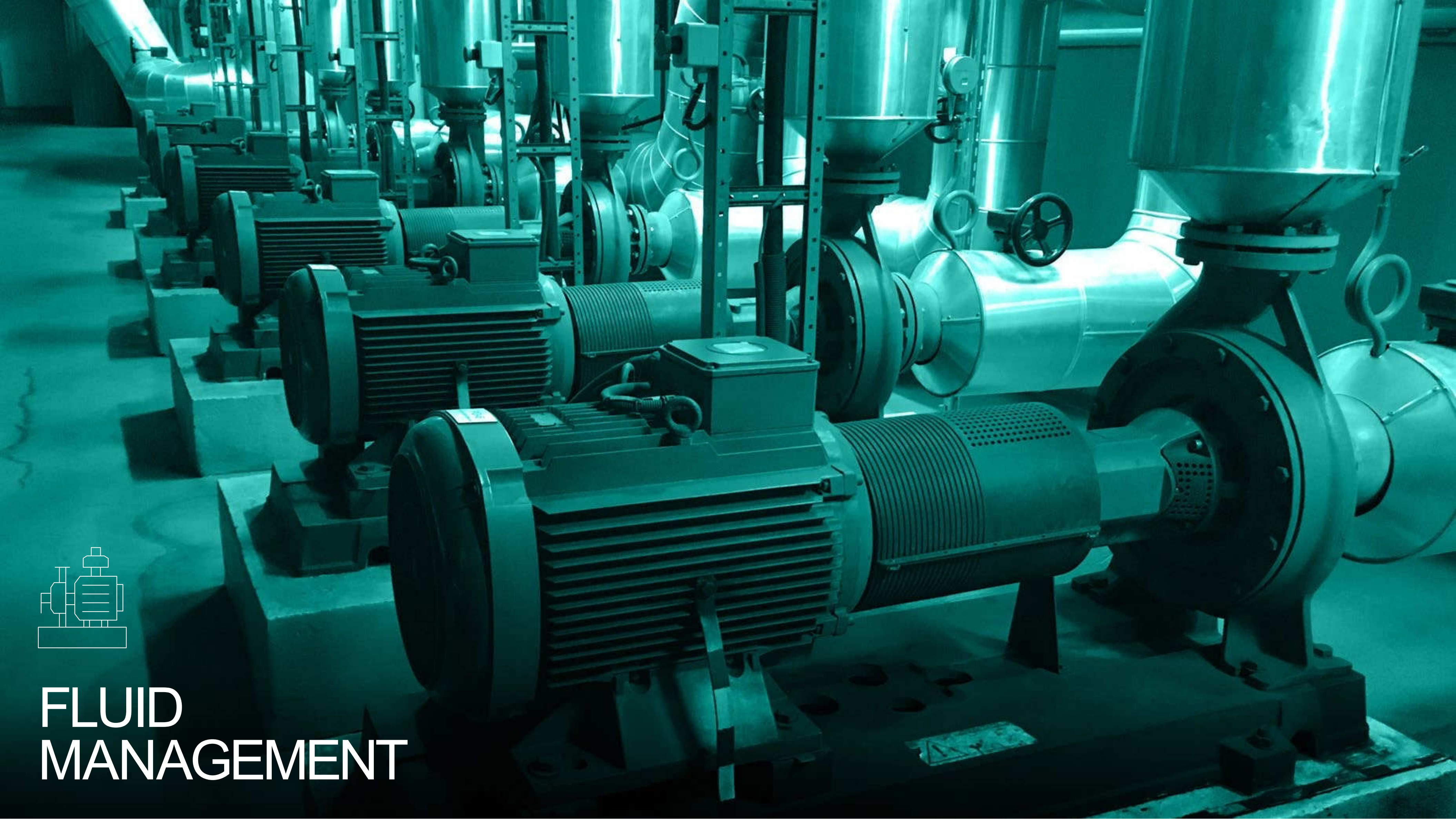
Ultraviolet (UV) is widely used for the disinfection and purification of wastewater and drinking water

Applications:

- > Food industry
- > Drinking water
- > Swimming pools
- > Agriculture
- > Aquaculture
- > Wastewater
- > Cooling water

SELF-CLEANING FILTERS

Automatic self-cleaning filters in the suction and discharge sides of water treatment plants is one of FPX's specializations.



FLUID MANAGEMENT



FLUID MANAGEMENT

We offer products namely Pumps from Western Europe. These products command industry leadership due to rich experience in reliable product and service to the customers.

We offer products for applications namely: Environment & Energy, Chemical, Paper, Food, Pharmaceuticals, Mining, and Oil & Gas.

Our service, quality and original parts ensure that the pump in your system operates reliably. Our vast pump installations and customer satisfaction is a testimony to our product reliability. Our multiple production sites ensure parts can be supplied in quick time globally.



Visit our webshop for ex-stock delivery

END SUCTION PUMPS (FPES)



VERTICAL INLINE PUMP (FEG)



MONOBLOC PUMP (FPES-C)



CHEMICAL PUMPS (FCN)



SPLIT CASE PUMP (DELTA)



WATER NORM PUMP (FPES)		
	EU	US
FEATURES	End Suction, Back Pull Out, Volute Casing, Radially Split Design	
DN	50 to 300 mm	2" to 12"
FLOW RATE (Q)	5 to 1500 m ³ /hour	20 to 6600 US gpm
HEAD (H)	4 to 160 m	15 ft to 520 ft
LIQUID TEMPERATURE	105°C	220°F
SPEED	2900 rpm	3500 rpm

VERTICAL INLINE PUMP (FEG)		
	EU	US
FEATURES	Vertical Inline, Back Pull Out, Volute Casing, Radially Split Design	
DN	50 to 150 mm	2" to 6"
FLOW RATE (Q)	5 to 500 m ³ /hour	20 to 2200 US gpm
HEAD (H)	4 to 150 m	15 ft to 500 ft
LIQUID TEMPERATURE	85°C	185°F
SPEED	2900 rpm	3500 rpm

MONOBLOC PUMP (FPES-C)		
	EU	US
FEATURES	End Suction, Monobloc, Volute Casing, Radially Split Design	
DN	32 to 80 mm	1.5" to 3"
FLOW RATE (Q)	8 to 220 m ³ /hour	35 to 950 US gpm
HEAD (H)	10 to 95 m	30 to 310 ft
LIQUID TEMPERATURE	85°C	185°F
SPEED	2900 rpm	3500 rpm

CHEMICAL PUMPS (FCN)		
	EU	US
FEATURES	End Suction, Back Pull Out, Volute Casing, Radially Split Design	
DN	50 to 300 mm	2" to 12"
FLOW RATE (Q)	5 to 1400 m ³ /hour	22 to 6100 US gpm
HEAD (H)	5 to 140 m	18 to 450 ft
LIQUID TEMPERATURE	250°C	480°F
SPEED	2900 rpm	3500 rpm

SPLIT CASE PUMP (DELTA)		
	EU	US
FEATURES	Axially Split Casing, Double or Single Volute Casing, Enclosed Impeller	
DN	50 to 1200 mm	2" to 48"
FLOW RATE (Q)	30 to 18,000 m ³ /hour	135 to 79,300 US gpm
HEAD (H)	5 to 140 m	18 ft to 450 ft
LIQUID TEMPERATURE	250°C	480°F
SPEED	2900 rpm	3500 rpm

MULTISTAGE PUMP (FMS)



MULTISTAGE PUMP (FMS)		
	EU	US
FEATURES	Radially Split Design, Multistage, Ring Section Diffuser type	
DN	50 to 200 mm	2" to 8"
FLOW RATE (Q)	15 to 500 m3/hour	70 to 2200 USgpm
HEAD (H)	16 to 640 m	30 to 200 ft
LIQUID TEMPERATURE	85°C	185°F
SPEED	2900 rpm	3500 rpm

END SUCTION PUMP (ES)



END SUCTION PUMP (ES)		
	EU	US
FEATURES	End Suction, Mixed Flow, Semi Open/ Enclosed Impeller, Back Pull Out, Volute Casing	
DN	250 to 600 mm	10"- 24"
FLOW RATE (Q)	400 to 6000 m3/ hour	1750 to 26,400 USgpm
HEAD (H)	25 m	85 ft
LIQUID TEMPERATURE	160°C	320°F
SPEED	1450 rpm	1750 rpm

VERTICAL INLINE MULTISTAGE PUMP (FVS)



VERTICAL INLINE MULTISTAGE PUMP (FVS)		
	EU	US
FEATURES	Vertical Inline, Multistage	
DN	35 to 150 mm	1 1/4" to 6"
FLOW RATE (Q)	3 to 240 m3/hour	15 to 1050 USgpm
HEAD (H)	10 to 240 m	30 to 787 ft
LIQUID TEMPERATURE	120°C	240°F
SPEED	2900 rpm	3500 rpm

VERTICAL TURBINE PUMP (FVT)



VERTICAL TURBINE PUMP (FVT)		
	EU	US
FEATURES	Vertical Suspended, Diffuser, Single/ Multistage, Non - Pull Out /Pull Out Design	
DN	50 to 2800 mm	2" to 112"
FLOW RATE (Q)	20 to 70,000 m3/ hour	88 to 308,000 USgpm
HEAD (H)	300 m	984 ft
LIQUID TEMPERATURE	60°C	104°F
SPEED	1500 rpm	1800 rpm

Description

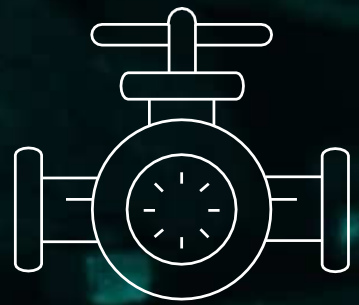
Vertical suspended Vertical Turbine Pumps, Single Or Multistage construction in Axial or Radial and mixed flow design with enclosed, mixed or open impeller design depending on the application.

Design Variants:

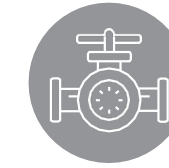
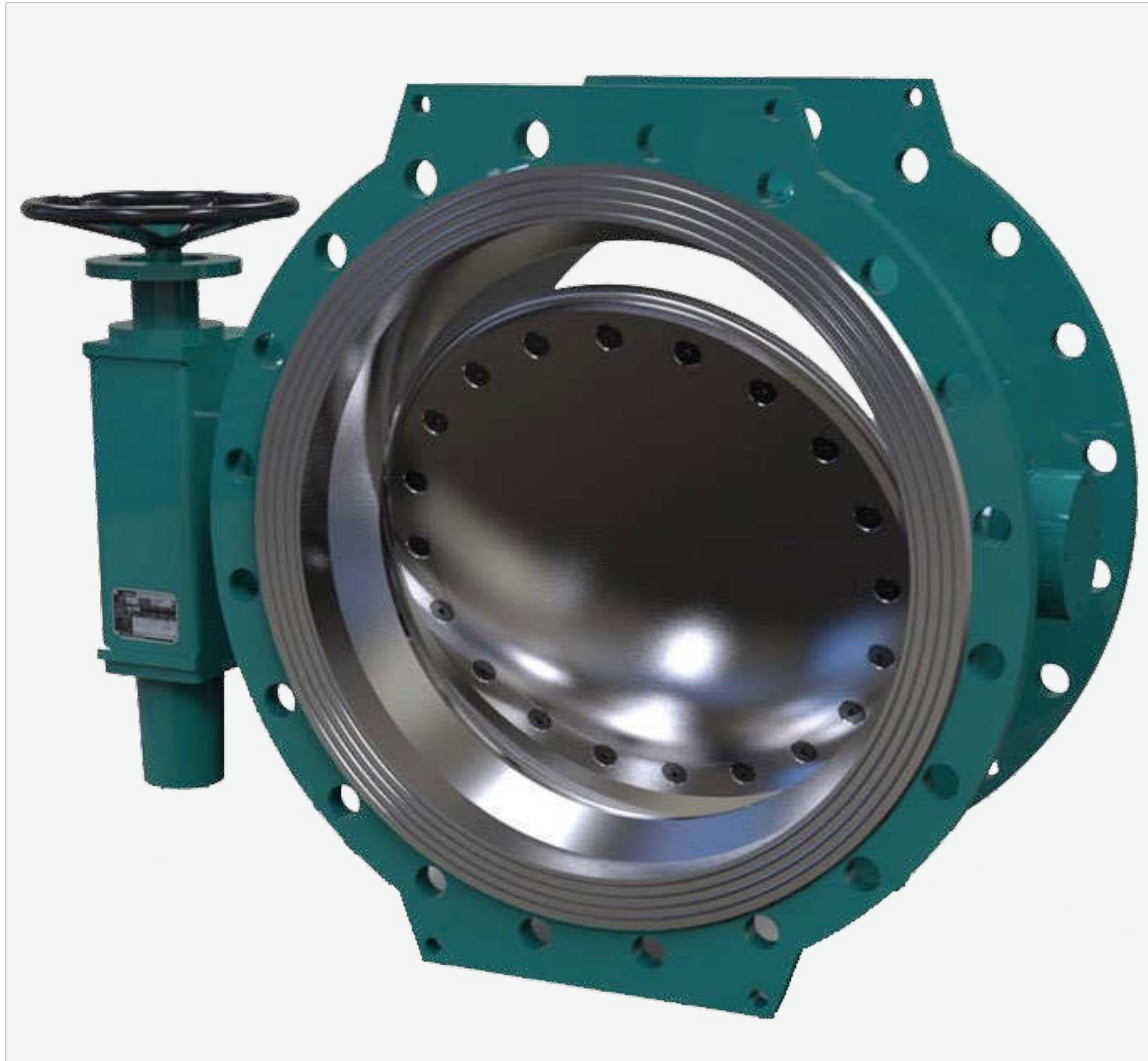
- > Dry pit
- > Wet pit
- > Below ground discharge
- > Above ground discharge
- > Pull out design (Bowl only or complete pump)

Flanges:

- > BS
- > EN
- > DIN
- > ANSI
- > AWWA



VALVES



VALVES

We have a wide range of valves with the design, a large stock available for immediate delivery. We cater to requirements from Water, Oil & Gas, Petrochemical and General Industry.

Our products are exported globally from Netherlands.

Our broad range of products includes:

Butterfly Valves Globe

Valves Gate Valves

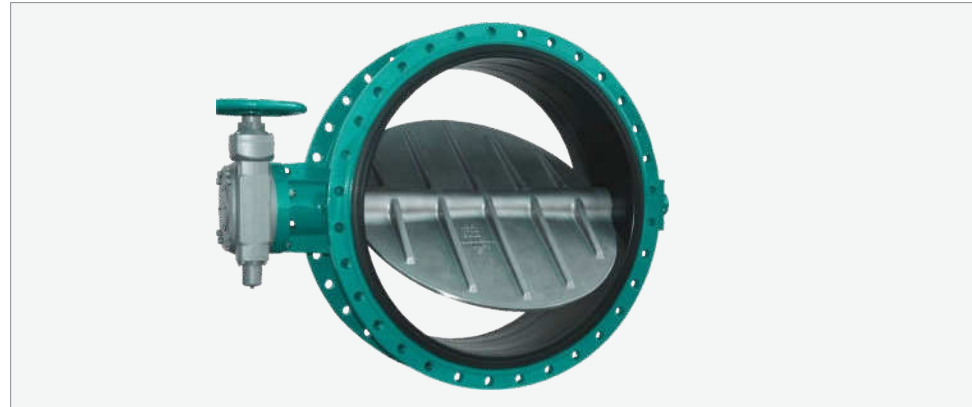
Ball Valves Check

Valves



Visit our webshop for ex-stock delivery

BUTTERFLY VALVES



GATE AND GLOBE VALVES



CHECK AND BALL VALVES



BALL VALVES



RUBBER LINED BUTTERFLY VALVES CENTRIC DISC DESIGN (WAFER/LUG)

Size Range	40 NB to 1200 NB
Pressure Rating	40 NB to 600 NB-PN20 (max) > 600 NB-PN10 (max)
Temperature Range	25 Deg C to 200 Deg C (Depending on material)
Operator	HUGS/Pneumatic Actuator/ Electrical Actuator

RUBBER LINED BUTTERFLY VALVES CENTRIC DISC DESIGN (WAFER/LUG)

Size Range	50 NB to 350 NB
Pressure Rating	PN 10 (Max)
Temperature	-25 Deg C to 200 Deg C (D.O.M.) With rubber encapsulated disc.

RUBBER LINED BUTTERFLY VALVES CENTRIC DISC DESIGN (WAFER/LUG)

Size Range	50 NB to 1200 NB
Pressure Rating	50 NB to 600 NB- PN20 (max) >600 NB to 1200 NB- PN10 (max)
Temperature	-25 Deg C to 200 Deg C (Depending on material)
Operator	HUGS/Pneumatic Actuator/ Electrical Actuator

GATE VALVE

Bolted Bonnet, Pressure Seal Bonnet, Outside Screw & Yoke, Manual Operated / Chain Wheel Operated / Motorised, Position Indicator/ Limit Switches/ Extended Bonnet/ Extended Stem

Size Range	50NB to 1200NB
Pressure Rating	#150 , #300, #600, #900, #1500, #2500
Trim	All API Trim material available

GLOBE VALVE

Bolted Bonnet, Pressure Seal Bonnet, Outside Screw & Yoke, Manual Operated / Motorised, Extended Bonnet/

Size Range	50NB to 500NB
Pressure Rating	#150 , #300, #600, #900, #1500, #2500
Trim	All API Trim material available

DUAL PLATE CHECK VALVE

(NRV)-Wafer/Lugged/Flanged ends, Spring Loaded Soft Seat, Metal Seat/ Cast Iron, Steel Body

Size Range	50NB to 1200NB
Pressure Rating	#150, #300, #600
Trim	All API Trim material available
Cast Iron DPCV Rating up to PN 16	50 NB to 450 NB

CHECK VALVES

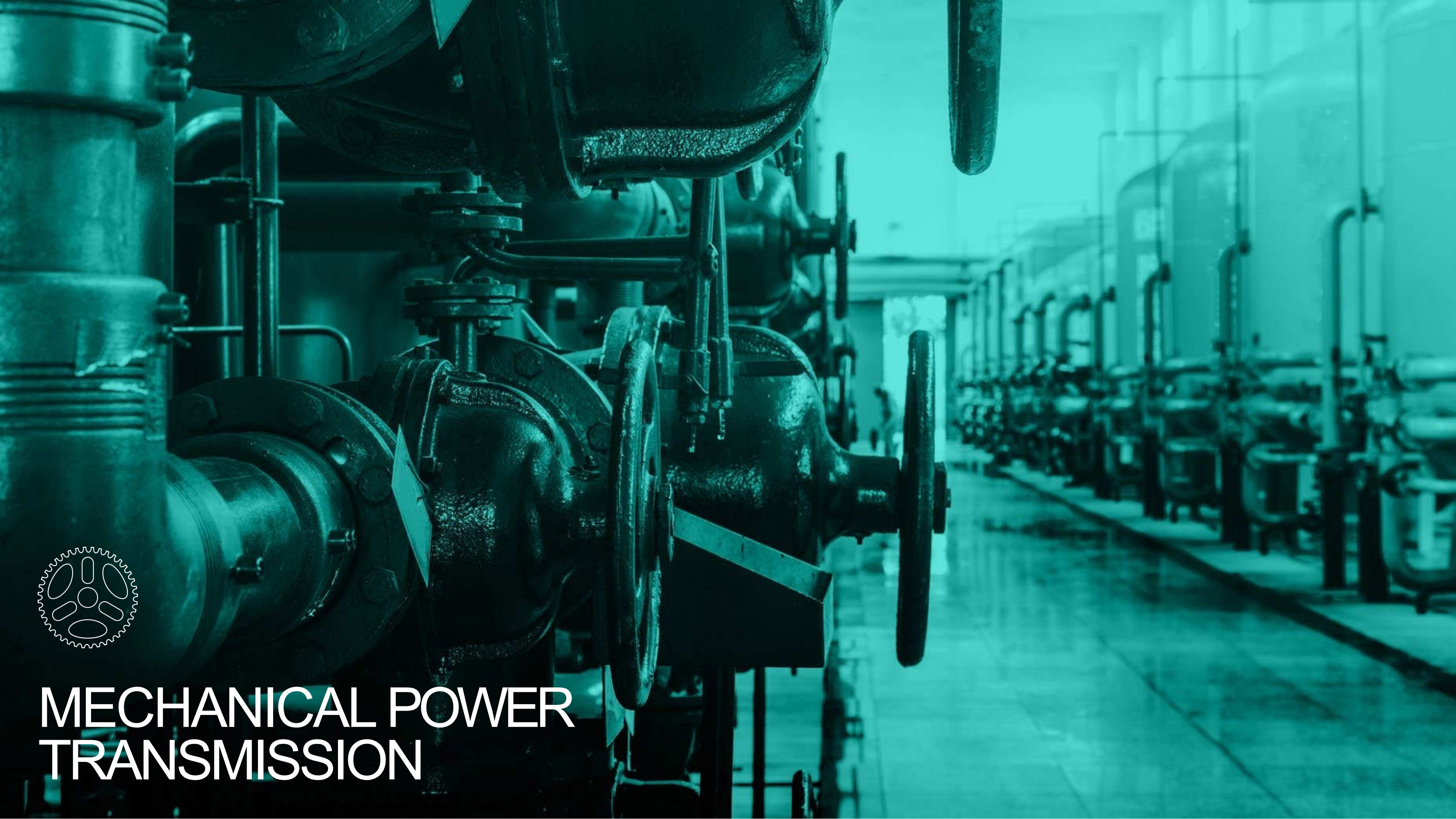
Swing Check Valve (NRV)- Bolted Cover, Pressure Seal Cover, Flange ends Dash pot arrangement for non-slam application, Internal arrangement

Size Range	50 NB to 1200 NB
Pressure Rating	#150 , #300, #600, #900, #1500, #2500
Trim	All API Trim material available

BALL VALVES

Trunnion Mounted Ball Valve, 2/3 piece, FB/RB, Flanged ends

Size Range	50 NB to 600 NB
Pressure Rating	#150 , #300, #600
Operator	Hand lever, Gear Box, Actuator
Material	Cast Steel, Stainless Steel (special on request)
Seat Material	PTFE, Devlon, Nylon, Metal seat.



MECHANICAL POWER TRANSMISSION



The coupling and Anti - Vibration Mountings (AVM) can also be supplied with ATEX certification. Design range is available up to 6000 kN and diameter 2200 mm.



MECHANICAL POWER TRANSMISSION

We manufacture a wide range of high quality couplings and supply to rotary equipment manufacturers like Pumps and Compressors globally. We have support of manufacturing the transmission products to the Industrial customers since 1986 & more than 400,000 couplings have been supplied to customers all over the world.

We offer our products listed below to end users, service companies and stockists.

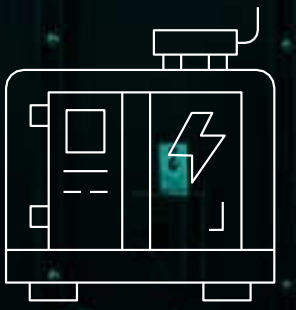
Universal Joints

Standard Gear

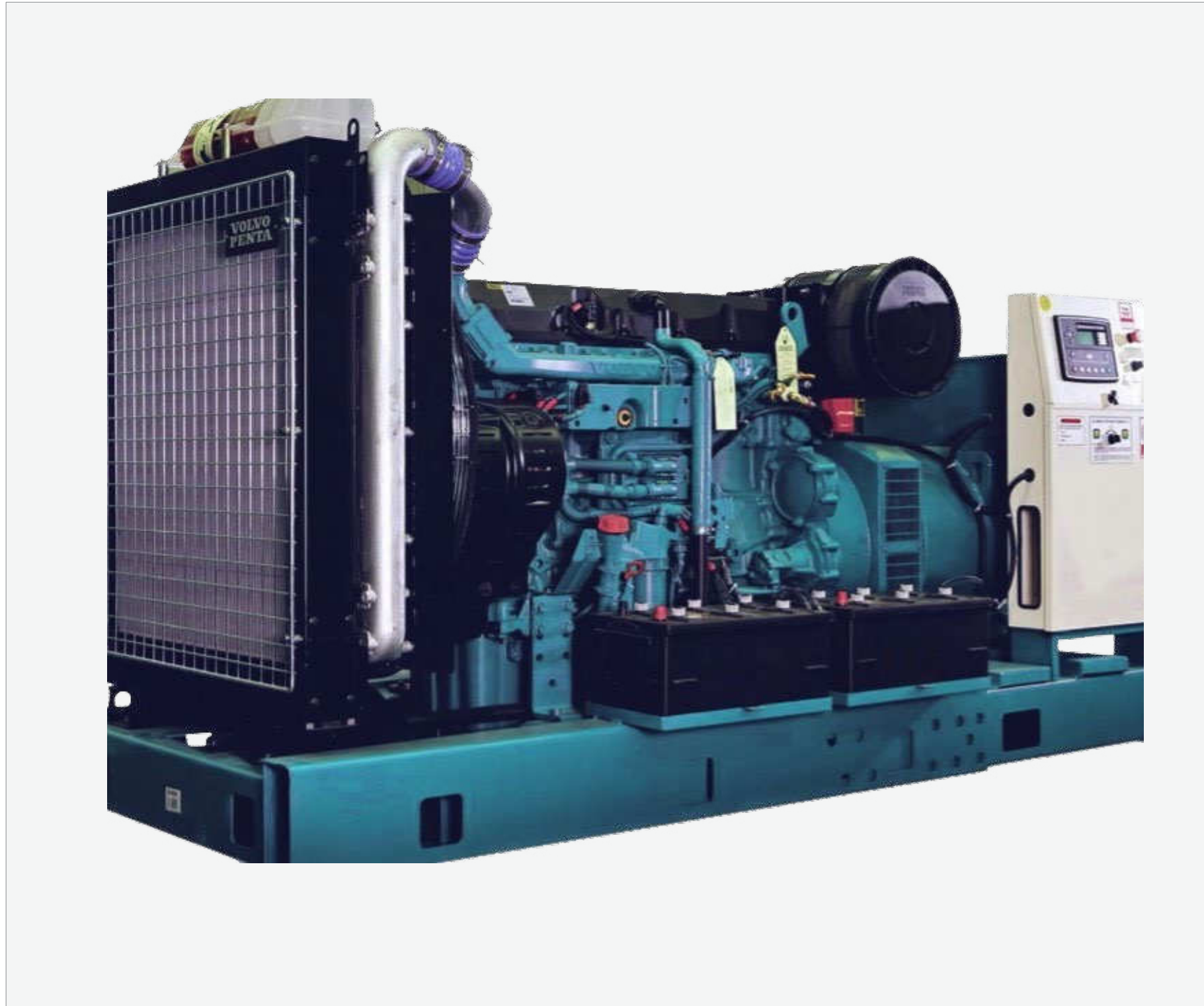
Couplings Flexible

Disc Couplings Pin

& Bush Couplings



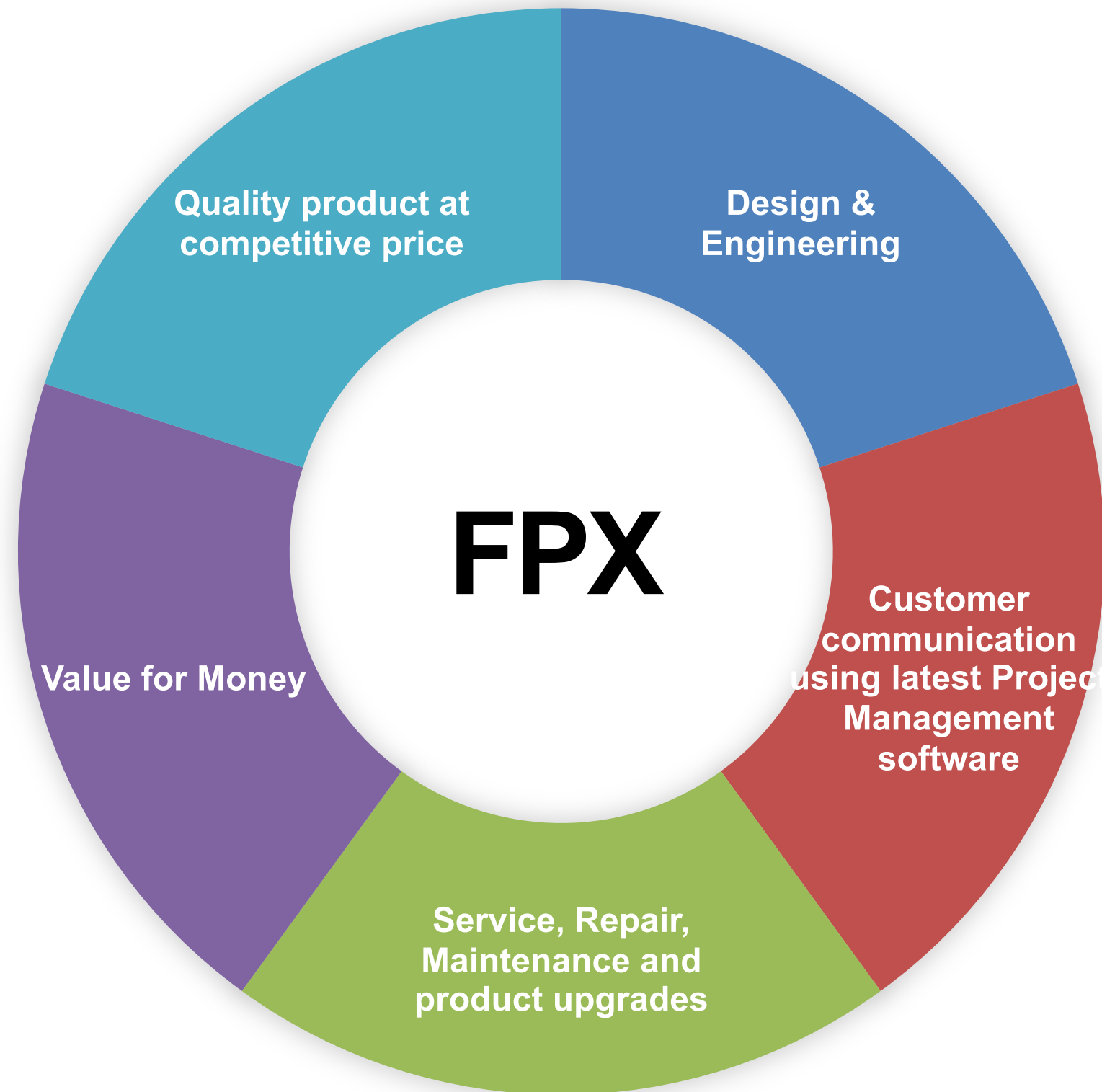
POWER GENERATION



POWER GENERATION

We help you find The Right Product for your Power Needs.

FPX can offer a wide range of diesel generator sets for a superior power solution through its performance, flexible range of features and ease of serviceability in the field. Our standard product range starts from 5 kVA to 2000 kVA with various variants.



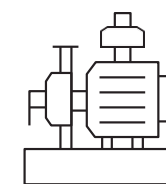
FPX in Nutshell

Engineering company, manufacturer and a service provider that offers end to end solutions to its customers by being closer to the market and its customers.

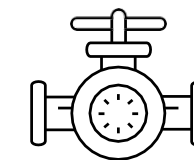
Motto of the company is high quality products, delivered on time at competitive price.



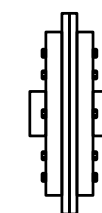
WATER TREATMENT



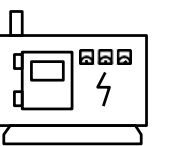
FLUID MANAGEMENT



VALVES



MECHANICAL POWER TRANSMISSION



POWER GENERATION



FPX SOLUTIONS. B.V.

Stroombaan 10,
1181 VX Amstelveen, The Netherlands.

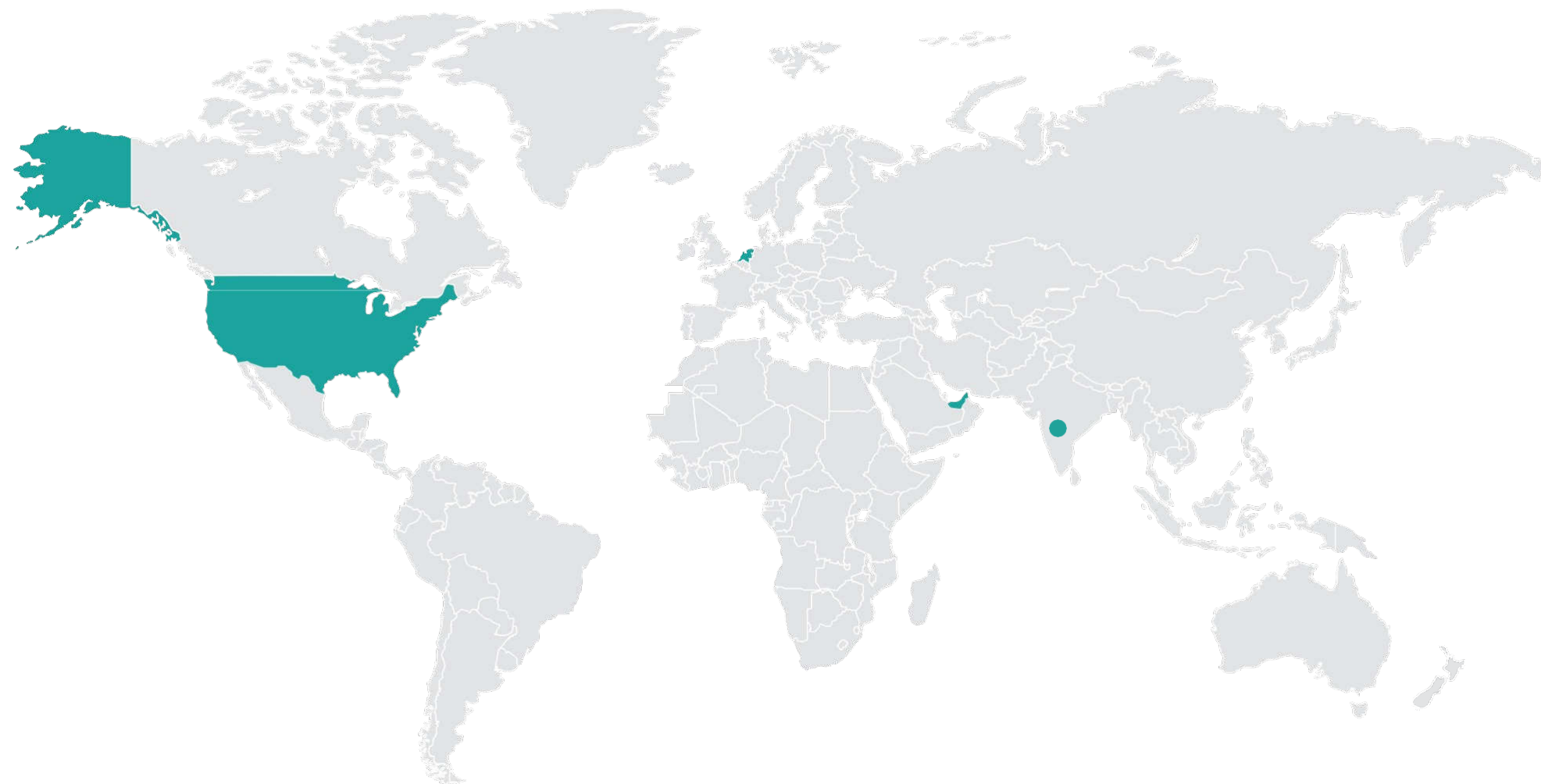
PHONE : +31 20 722 0898

EMAIL : sales@fpxsolutions.nl

WEBSITE: www.fpxsolutions.com

KVK / Chamber of Commerce: 75460335

BTW / VAT number: NL860291248B0



FPX

- **THE NETHERLANDS**
Head Office Manufacturing Plant
Field Services
- **DUBAI, U.A.E**
Assembly Facility Field Services
- **USA**
Field Services
- **INDIA**
Technology center



Visit our webshop for ex-stock delivery